

Welcome to the...



QUALITY OF LIFE FOUNDATION

Sadie Morgan

INAUGURAL SYMPOSIUM  
25th September 2023

Homes are not just structures, but cornerstones of our lives.

Today, we will be discussing:

Policy & Industry changes

Synergy & collaboration between stakeholders

Knowledge sharing and ultimately...

what needs to change in industry and policy for healthy homes and neighbourhoods.

FISHBOWL SPEAKERS:

- Camilla Siggaard Anderson
- Charlie Lemmer
- Dr Alice Mpotu-Coles
- Joanne Lancaster
- Michael Blake
- Sophie White
- Rebekah Paczek
- Martyn Evans
- Dinah Bornat
- Clare Delmar
- Julia Thrift
- Sem Lee
- Jerry Tate
- Harriet Saddington
- Andrew Van Doorn
- Sarah Allen

LET'S BEGIN...



Jonny Anstead



Happy people make good places, good places have value. - fundamental to developing.



Understand dynamics of the community

When developing and selling properties...

...there's not much thought what's outside the door...

### DEAD SPACES

1% of 30,000 are involved in town planning. Lots of the community are left out, and there needs to be diversity in decision making - balance of power.



we don't feel a part of the development.

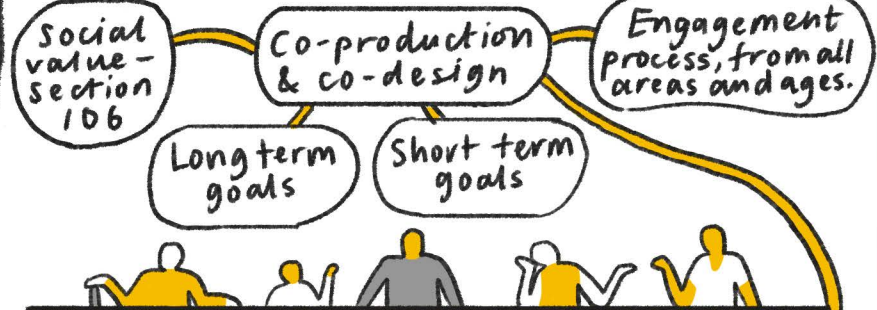
Buildings are then not fit for purpose.

Development sites can seem private, expensive and inaccessible.

KEEP OUT

Why a sense of control is important ~ culture of participation.

It's important to reflect a community's needs... NOW & IN THE FUTURE.



PARTICIPATION PRACTICE  
Panel with a mix of ages. Relationships are formed with each other = TRUST!  
This encourages inclusivity within the group.

BUT WHAT DOES THIS MEAN?

Planners are scared of participation...

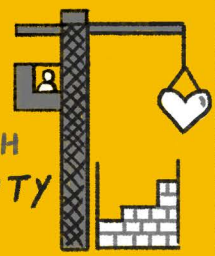
The process needs to be more ENJOYABLE!

should we talk to people on a continuous basis?

### HEALTHCARE

Language of healthcare and medicine within development:

1. DO NO HARM
2. SOCIAL DETERMINANTS OF HEALTH
3. PREVENTION, HEALTH LONGEVITY
4. GIVE HOPE



### HEALTH & CLIMATE

We have to create healthy places that support the planet, people and the economy.



Data in every council

We've got the data and evidence on housing and health, but we're not using it.



HOW

do we create health in housing?

Question of wellbeing

Should be a stronger part of policy making

GO

Beyond financial return - and fight against economic incentive.

'Value' has a different meaning in different areas.



Contractors also play a role...

It's important to remember local communities may have to live through construction sites.

ENGAGE THROUGHOUT THE PROCESS & COMMUNICATE

Enable people to understand how they can contribute, and join the conversation



THANKS TO ALL OUR SPEAKERS FOR OPENING UP THE CONVERSATION!